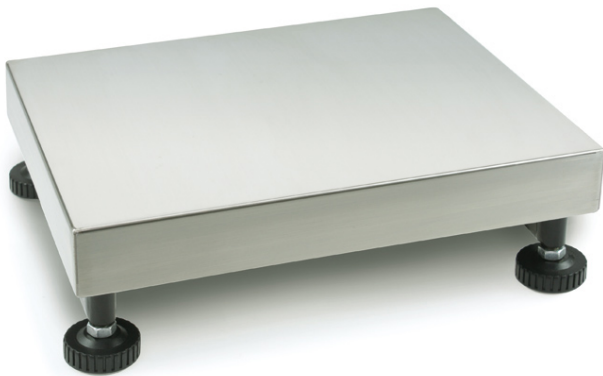


KERN KFP 3V20M

KERN

Platform: weighing plate of stainless steel, painted steel base, silicone-coated aluminium load cell with protection against dust and water splashes IP65



Category

Brand	KERN
Product category	Component
Product group	Platform
Product family	KFP-V20-IP65

Measuring System

Weighing capacity [Max]	3 kg
Readability [d]	100 mg
Minimum weight [Min]	20 g
Loadcell type	aluminium IP65 silicone-coated
Load cell connection	4-wire
Load cell OIML class	C3

Approval

Verification scale interval [e]	1 g
---------------------------------	-----

Construction

Dimensions weighing platform (W×D×H)	230×230×106 mm
Material weighing plate	stainless steel
Material platform	steel, powder-coated
Dimensions weighing surface (W×D)	230×230 mm
Cable length	2,5 m
Allowed cable length display device [Max]	3 m
Transport safety lock - bolt torque	0,1 Nm
Material load cell(s)	aluminium
Load cells - number	1
Levelling feet adjustable	✓

Functions

IP protection - load cell	IP65
---------------------------	------

Packing & Shipping

Readability force [d] (N)	1 d
Dimensions packaging (W×D×H)	315×310×165 mm
Net weight	3,3 kg
Shipping method	Parcel service
Net weight approx.	3,4 kg
Gross weight approx.	4,4 kg
Shipping weight	4,3 kg

Services (optional)

Article number for DAkkS calibration	963-127
--------------------------------------	---------

Pictograms

STANDARD



FACTORY

